

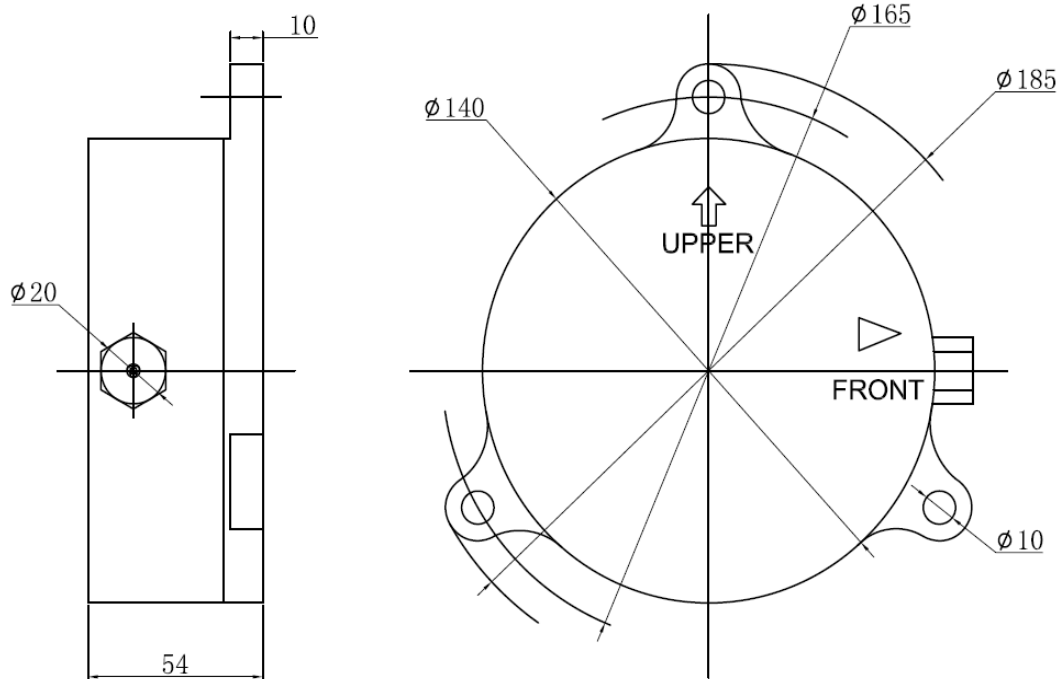
MODEL: WS-JDC-100



Feature:

- Precision linear
- Long mechanical life
- High resolution
- Small dynamic noise
- Convenient and reliable installation

Standard Dimensions



General Specifications

Element: WDD angular displacement sensor (conductive plastic)

Measuring range: $-10^{\circ}\sim+110^{\circ}$

Rated output: DC 3V~6.9V/0~90°

Linearity: **0.1%, 0.5%, 1%**

Excitation: DC 15V (the highest excitation 40 Vmax)

Usage temperature range: $-20^{\circ}\text{C}\sim+60^{\circ}\text{C}$

Ambient humidity: 10%~95%

Vibration proof: 4G 33HZ

Shock proof: 20G 15ms~20ms)

Water resisting: water proof

Weight: about 1.8kg

Special Specifications Available

Shaft Length,Diameter,stopper,special electrical travel,Special machining on the shaft.

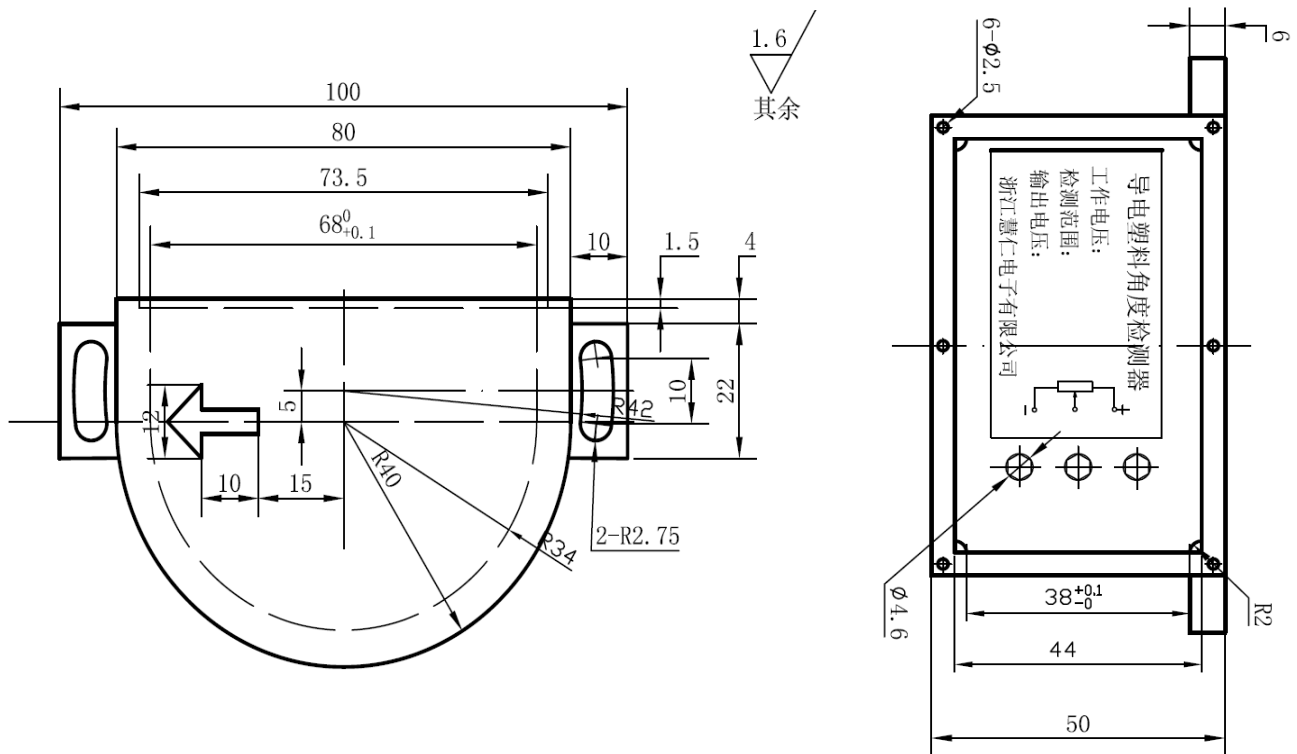
MODEL: WS-XJD-100



Feature:

- Precision linear
- Long mechanical life
- High resolution
- Small dynamic noise
- Convenient and reliable installation

Standard Dimensions



General Specifications

Product model: WDS-XJD-01L (left mounted) WDS-XJD-01R (right mounted)

Element: WDD angular displacement sensor (conductive plastic)

Measuring range: $-5^{\circ}\sim+90^{\circ}$

Rated output: 0.05~1.33V/3V~6.9V

Linearity: **0.1%, 0.5%, 1%**

Excitation: 5DCV~15DCV

Usage temperature range: $-20^{\circ}\text{C}\sim+60^{\circ}\text{C}$

Ambient humidity: 10%~95%

Vibration proof: 4G 33HZ

Shock proof: 20G 15ms~20ms)

Water resisting: water proof

Weight: about 500g

Special Specifications Available

Shaft Length, Diameter, stopper, special electrical travel, Special machining on the shaft.