

Conveyor Belt - Pull Rope Switch

Model: IS-RPK-II



Emergency pull-wire switch

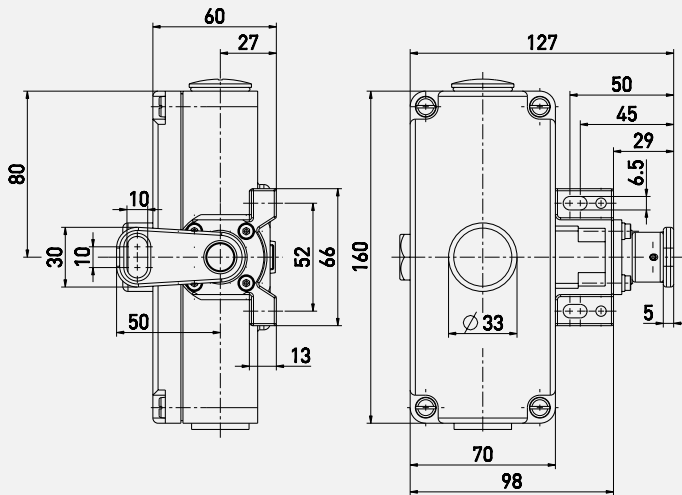
Features/Options:

- Metal enclosure
- 2 or 4 contacts
- Wire length up to 2 x 100 m
- Release by push button, key or pull ring is possible
- Available without unlocking mechanism (to EN 60947-5-1)
- Wire pull and breakage detection

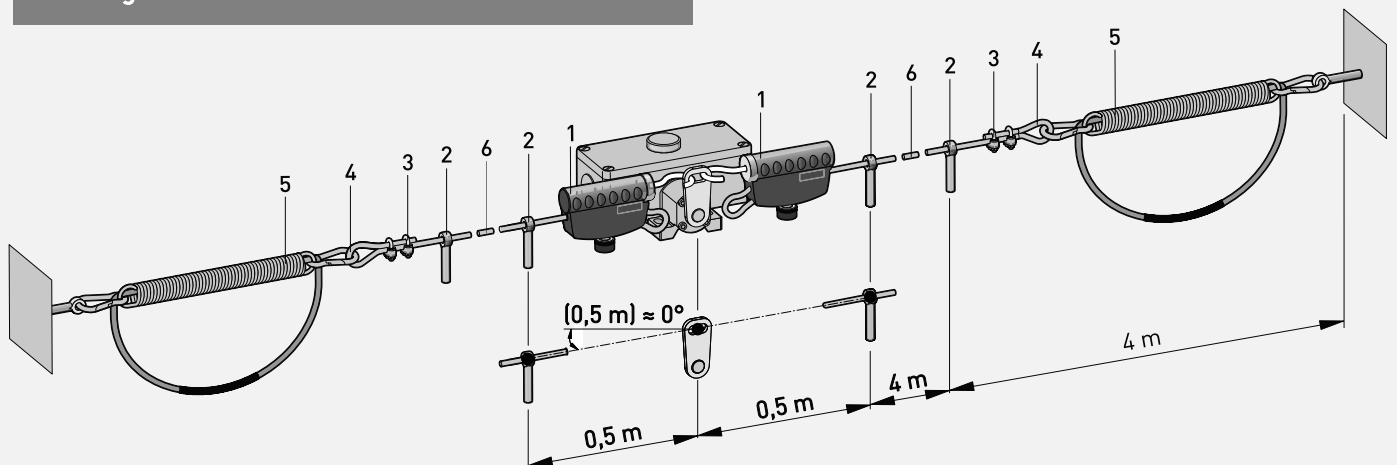
Technical data

Applied standards	EN 60947-5-1, EN 60947-5-5, EN ISO 13850, EN ISO 13849-1
Enclosure	aluminium die-cast, powder-coated
Cover	aluminium die-cast, powder-coated
Degree of protection	ZS 75 S VD: IP 65
B _{10d} (10 % load)	to IEC/EN 60529 000 200
T _M	max. 20 years
Contact material	silver
Switching elements	NC/1 NO contact, 2 NC/2 NO contacts or 4 NC contacts, type 1
Switching system	Zb
Connection	snap action, positive break NC contacts ⊖
Cable cross-section	screw connection terminals
Cable entry	(max. 2.5 mm ² (incl. conductor ferrules) M25 x 1.5 2
Rated impulse withstand voltage U _{imp}	kV 6
Rated insulation voltage U _i	V 400
Conventional thermal current I _{the}	A 6
Utilisation category	AC-15
Rated operating current/voltage I _e /U _e	A/400 VAC 6
Short-circuit protection	A gG/gN fuse 6
Ambient temperature	-25 °C ... +70 °C
Mechanical life	> 100 000 operations
Indicator lamp	as option
Max. wire length	2 x 100 m

Dimensions



Mounting



No.	Part
1	Cable tensioner system
2	Eye bolt
3	Wire clamp
4	Wire thimble 3 mm
5	Compensation spring
6	Pull-wire

