

Conveyor Belt - Longitudinal belt tear detector

Model: IS-BTD-I



OVERVIEWS

When the conveyor belt is torn, punctured, damaged at the junction or sharp objects protrude, the tear switch can provide an alarm signal to the monitoring personnel or close the conveyor. Tear switches are installed on both sides of the conveyor belt in pairs and are connected by two sections of aviation steel wire rope with ethylene jacket. One end of the aviation steel wire rope is fixed on the support bracket

The other end is connected to the pull ring of the tear switch, and the two sections of aviation steel wire rope form a monitoring surface under the conveyor belt. When the object or the torn belt is suspended and swept down to the aviation steel wire rope, the aviation steel wire rope pulls the pull ring of the tear switch to make it act, and the tear switch sends an alarm or shutdown signal

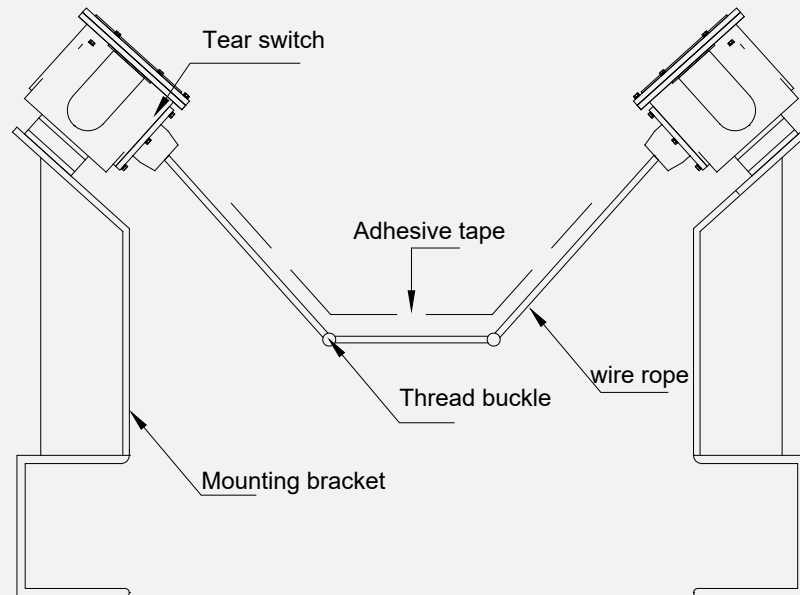
CHARACTERISTIC

- Adopt high-strength Aluminum-alloy precise die-casting shell, with strong impact resistant capability
- High protective degree of shell, good sealing property.
- Double switching output, large contact capacity, sensitive action and reliable performance.
- Plastic coated steel wire rope moisture proof, acid and alkali resistant, flame retardant

TECHNICAL DATA

Ambient temperature	-30°C~ +60°C	Action force	50N
Relative humidity	0 ~ 85%	Operating strok	20mm
Number of contacts	2NO 2NC	Limit strok	25mm
Reliability	>106time	Reset mode	Manual
Contact rating	AC380V 5A - DC24V 1A	Protection level	IP65

INSTALLATION DIAGRAM



WORKING PRINCIPLE

When an emergency occurs at the belt transportation site, pull the aviation steel wire rope tied to the lifting lug to make the sliding block in the machine act with the switch and send out the shutdown signal. After loosening the steel wire rope, operate the self-locking lever switch to reset automatically.

DIMENSION

