



Heavy Duty Limit Switch

Model: IS-HLS1



OVERVIEWS

Limit switch(position switches) is an electrical switch used to limit the movement limit position of mechanical equipment. Limit switches (position switches) are contact and non-contact. The contact type is more intuitive. On the moving parts of the mechanical equipment, the travel switch is installed, and the limit position of the block is installed on the fixed point of its relative movement, or the opposite installation position. When the mechanical contact of the travel switch hits the block, the control circuit is cut off (or changed), and the machine stops running or changes operation. Due to the inertial motion of the machinery, the stroke switch has a certain "overstroke" to protect the switch from damage

IS-HLS1 Heavy-duty Position Switches are reliable and efficient devices that are widely used in various industrial applications. These switches are designed to provide accurate and consistent signals that are essential for monitoring the position of a machine or equipment. With their advanced construction and high-grade materials, TL422-10Y switches offer outstanding performance and durability that ensures maximum productivity and safety in the workplace. It offers outstanding performance, durability, and versatility that ensures maximum productivity and safety

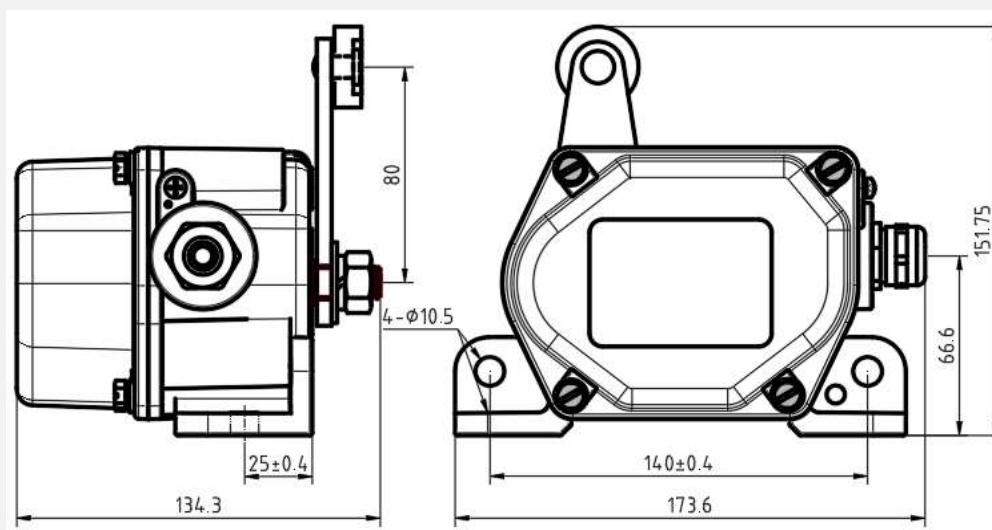
CHARACTERISTIC

- Adopt high-strength Aluminum-alloy precise die-casting shell, with strong impact resistant capability
- Adopt two-level action mode of light sway and heavy sway
- The shell has high protection level, good sealing, and can be used in harsh environment
- Large contact capacity, sensitive action and reliable performance
- It can be mounted in two different positions on the shaft

TECHNICAL DATA

Ambient temperature	-20°C~ 75°C	Action force	50-+10 N
Relative humidity	0 ~ 95%	Weight	1.6kg
Atmospheric pressure	80 kPa ~110kPa	First-level action angle	-+16°
Electrical life	>500,000 times	Second-level action angle	-+80°
Output mode and quantity	2×SPDT	Reset mode	Automatic
Contact rating	AC220-380V 5A - DC24V 5A	Protection level	IP65

DIMENSION



Units: mm